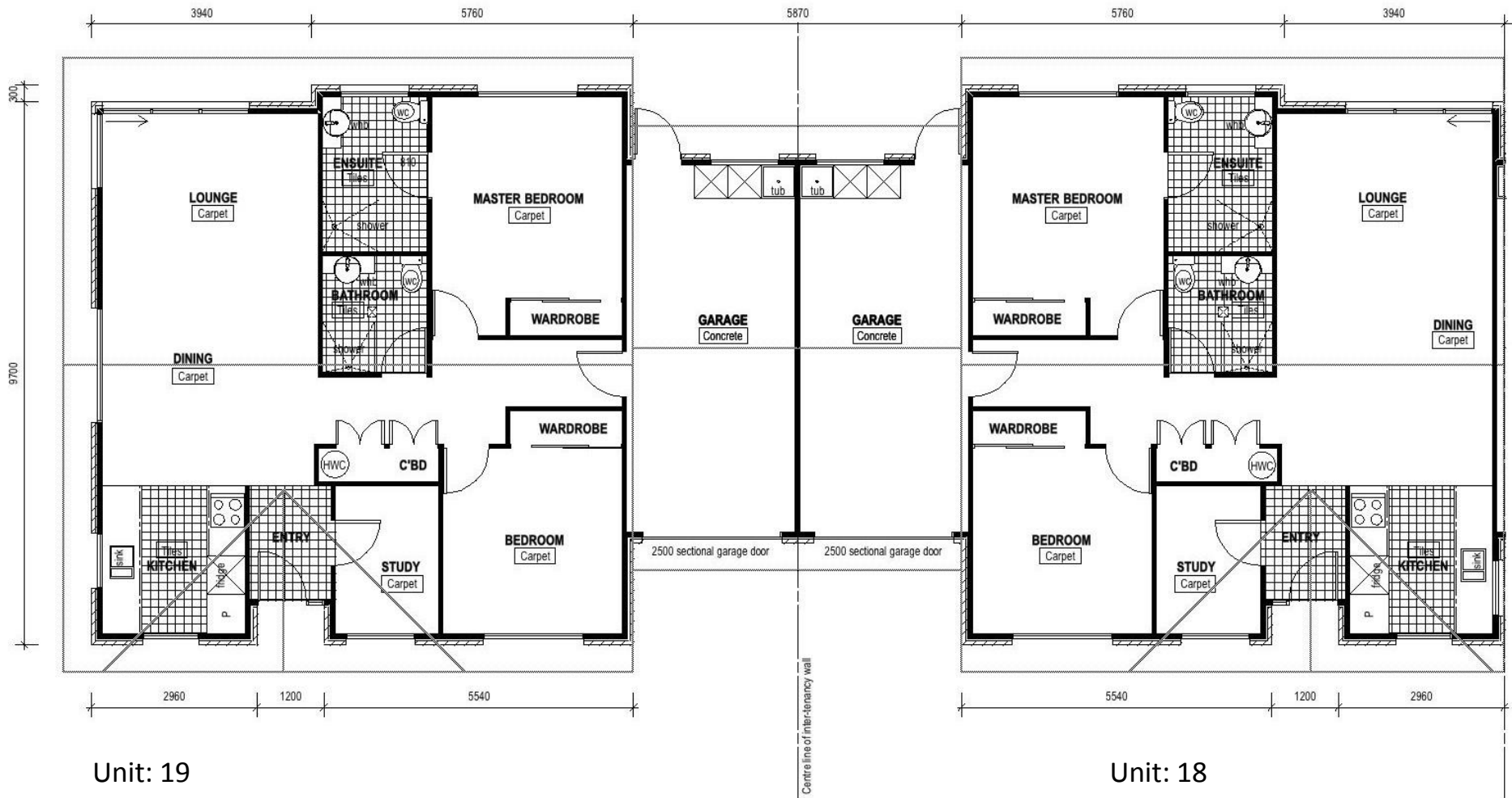


# Royalle Mews Estate

RETIREMENT VILLAGE



Unit: 19  
 Approx Area: 118.2sqm  
 Plan is subject to Change

Completed

Unit: 18  
 Approx Area: 116.7sqm  
 Plan is subject to Change

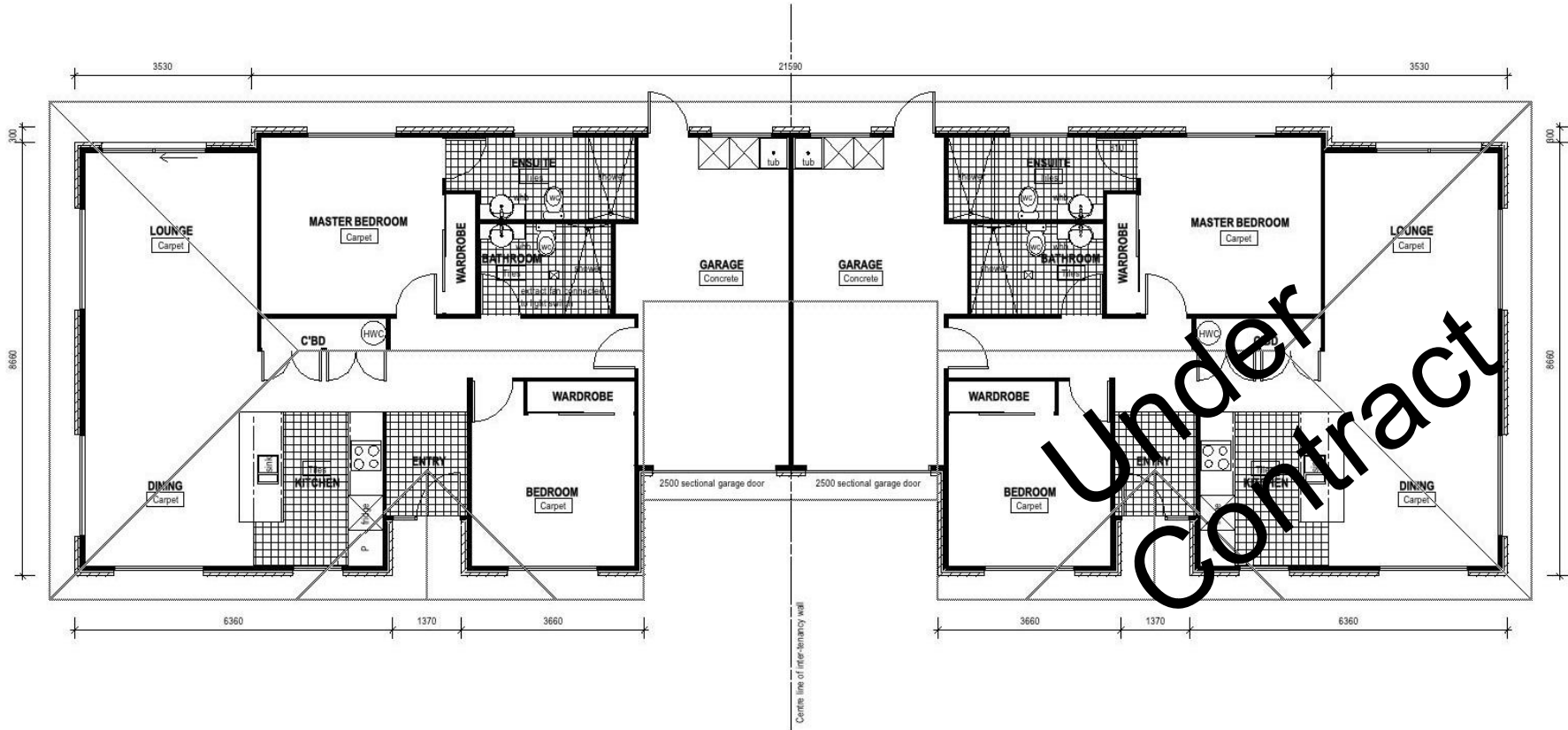
PO Box 37888  
 Parnell  
 Auckland 1151  
 Phone: (09) 309 4410  
 Fax: (09) 309 4450  
 Email: brian@tracys.co.nz

[www.RoyalleMews.co.nz](http://www.RoyalleMews.co.nz)

Sale Plan: SP306  
 Plan is subject to change  
 Plan is not to scale  
 February 2012  
 Not to be used for Construction

# Royalle Mews Estate

RETIREMENT VILLAGE



Unit: 21  
Approx Area: 120.0sqm

Completed

Unit: 20  
Approx Area: 120.0sqm

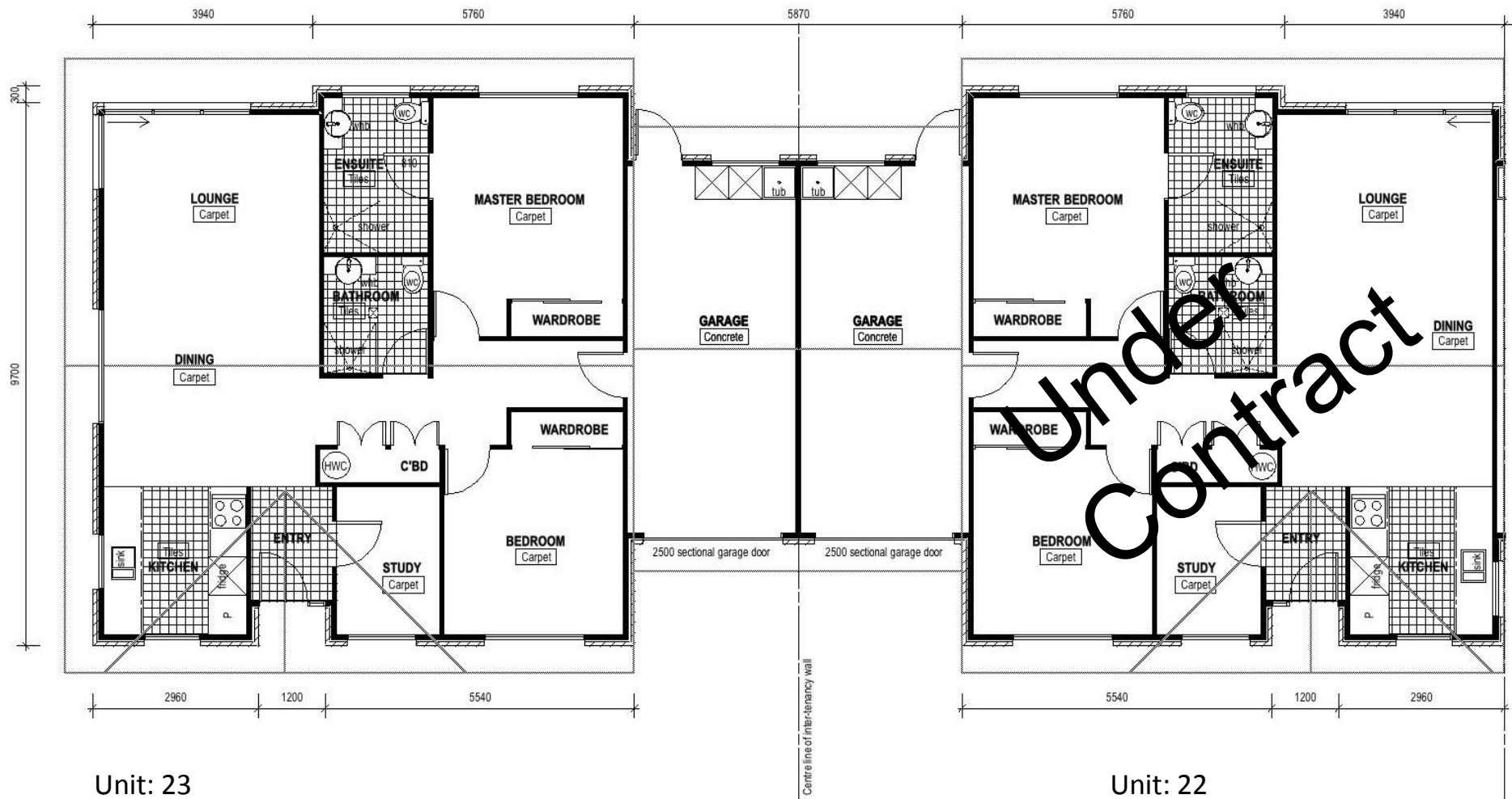
PO Box 37888  
Parnell  
Auckland 1151  
Phone: (09) 309 4410  
Fax: (09) 309 4450  
Email: brian@tracys.co.nz

[www.RoyalleMews.co.nz](http://www.RoyalleMews.co.nz)

Sale Plan: SP307  
Plan is subject to change  
Plan is not to scale  
February 2012  
Not to be used for Construction

# Royalle Mews Estate

RETIREMENT VILLAGE



Unit: 23  
Approx Area: 115.5sqm

Completed

Unit: 22  
Approx Area: 115.5sqm

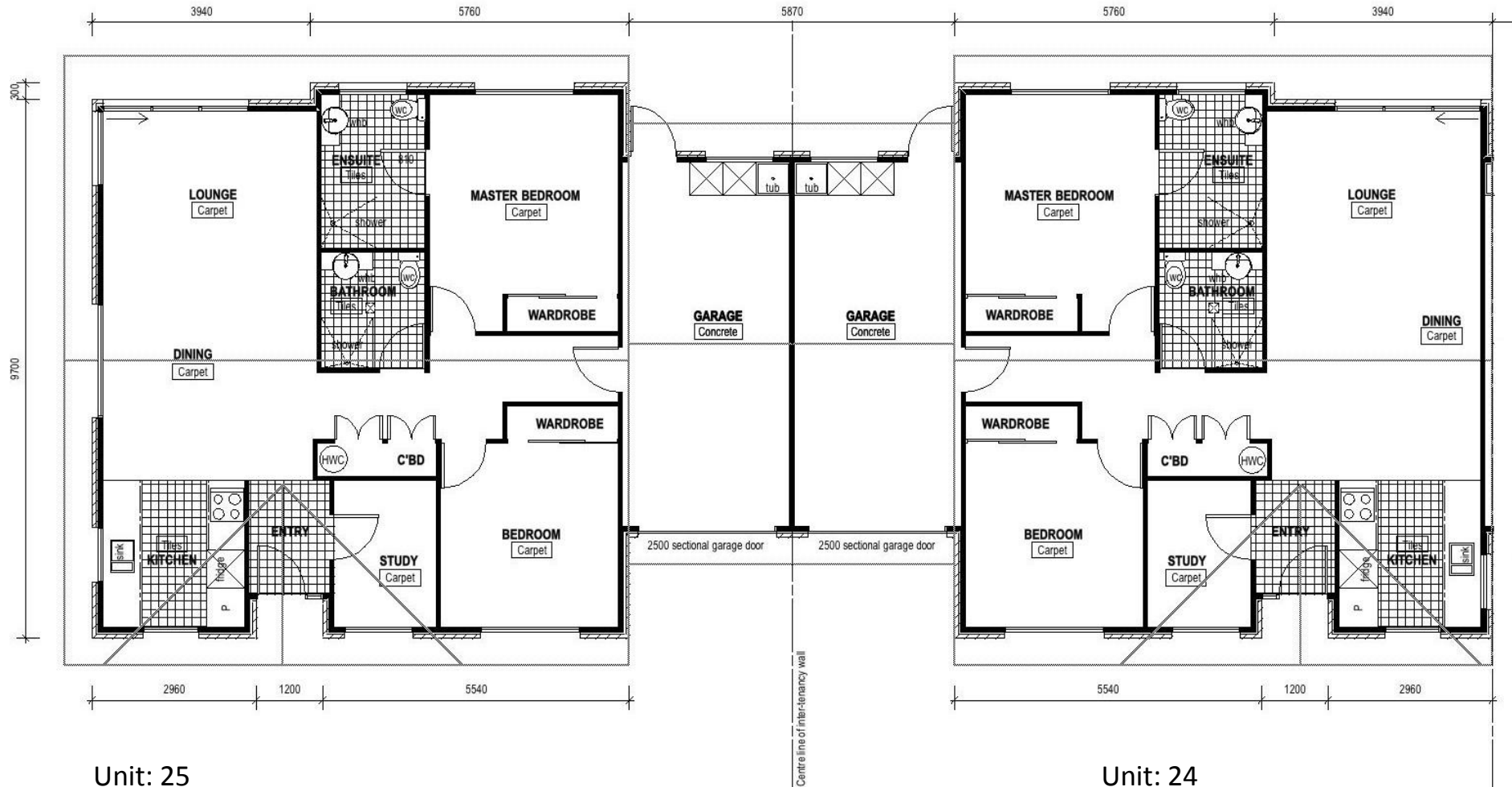
PO Box 37888  
Parnell  
Auckland 1151  
Phone: (09) 309 4410  
Fax: (09) 309 4450  
Email: brian@tracys.co.nz

[www.RoyalleMews.co.nz](http://www.RoyalleMews.co.nz)

Sale Plan: SP308  
Plan is subject to change  
Plan is not to scale  
February 2012  
Not to be used for Construction

# Royalle Mews Estate

RETIREMENT VILLAGE



**Unit: 25**  
 Approx Area: 115.5sqm

**Under Construction**

**Unit: 24**  
 Approx Area: 115.5sqm

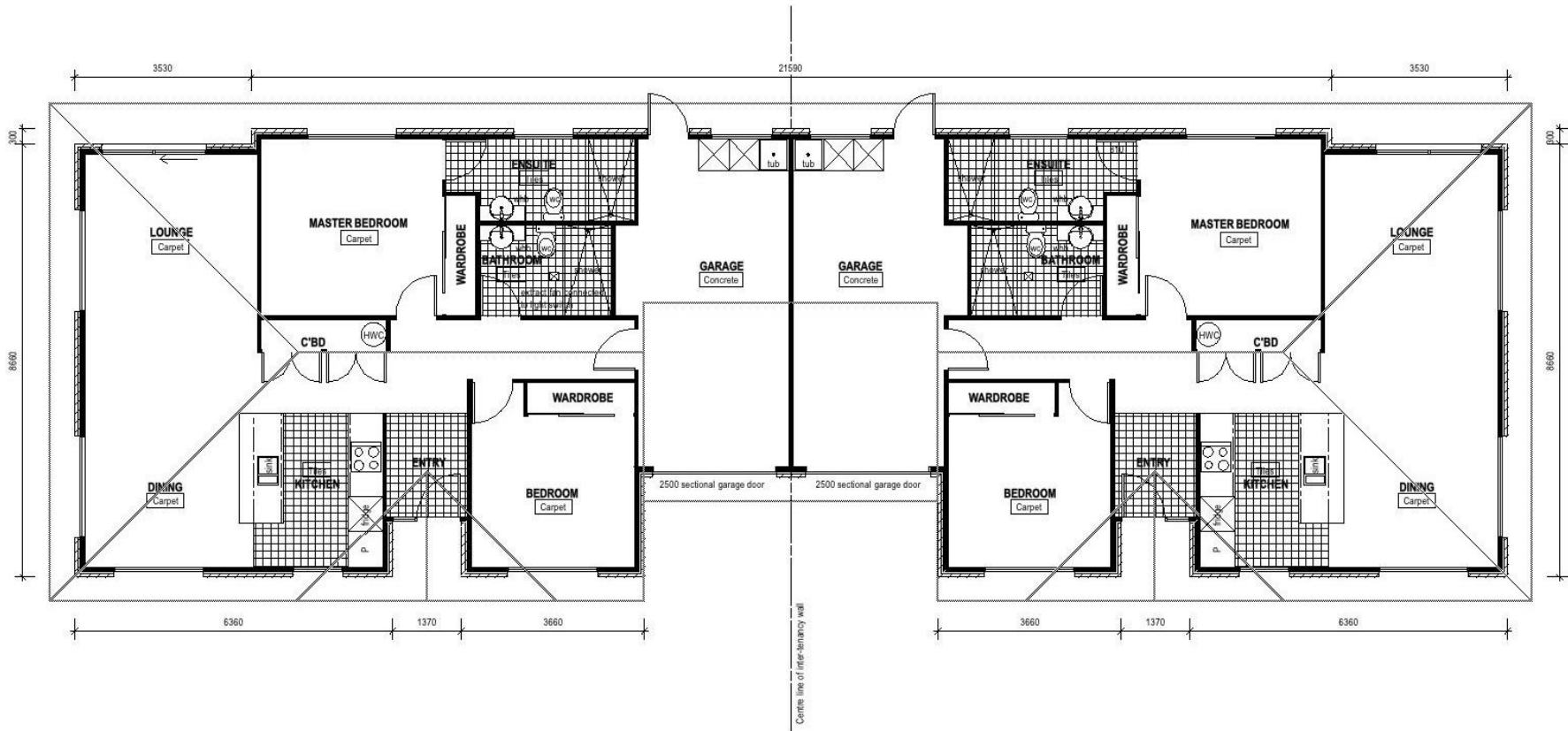
PO Box 37888  
 Parnell  
 Auckland 1151  
 Phone: (09) 309 4410  
 Fax: (09) 309 4450  
 Email: brian@tracys.co.nz

[www.RoyalleMews.co.nz](http://www.RoyalleMews.co.nz)

Sale Plan: SP309  
 Plan is subject to change  
 Plan is not to scale  
 February 2012  
 Not to be used for Construction

# Royalle Mews Estate

RETIREMENT VILLAGE



Unit: 27  
Approx Area: 120.0sqm

Under Construction

Unit: 26  
Approx Area: 120.0sqm

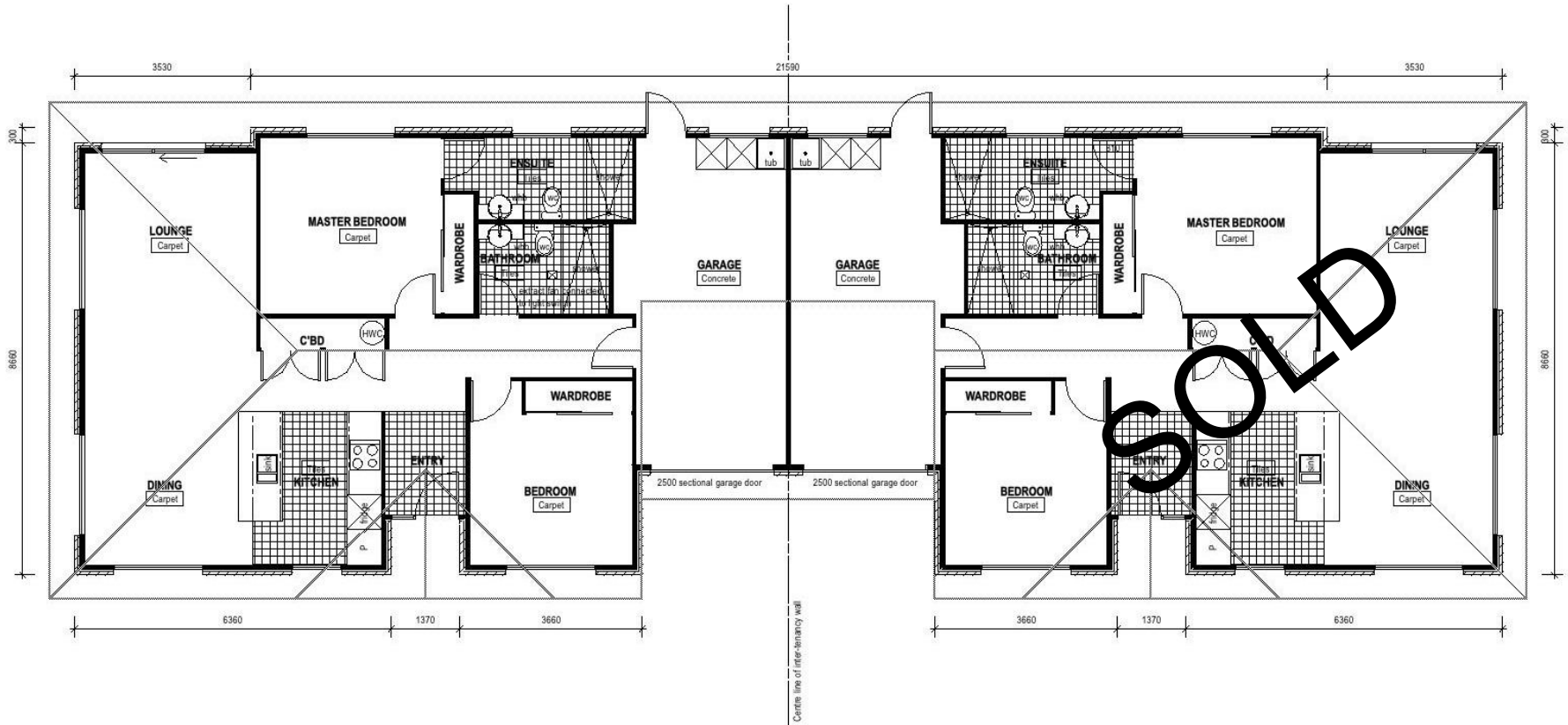
PO Box 37888  
Parnell  
Auckland 1151  
Phone: (09) 309 4410  
Fax: (09) 309 4450  
Email: brian@tracys.co.nz

[www.RoyalleMews.co.nz](http://www.RoyalleMews.co.nz)

Sale Plan: SP310  
Plan is subject to change  
Plan is not to scale  
February 2012  
Not to be used for Construction

# Royalle Mews Estate

RETIREMENT VILLAGE



Unit: 29  
 Approx Area: 120.0sqm

Completed

Unit: 28  
 Approx Area: 120.0sqm

PO Box 37888  
 Parnell  
 Auckland 1151  
 Phone: (09) 309 4410  
 Fax: (09) 309 4450  
 Email: brian@tracys.co.nz

[www.RoyalleMews.co.nz](http://www.RoyalleMews.co.nz)

Sale Plan: SP311  
 Plan is subject to change  
 Plan is not to scale  
 February 2012  
 Not to be used for Construction